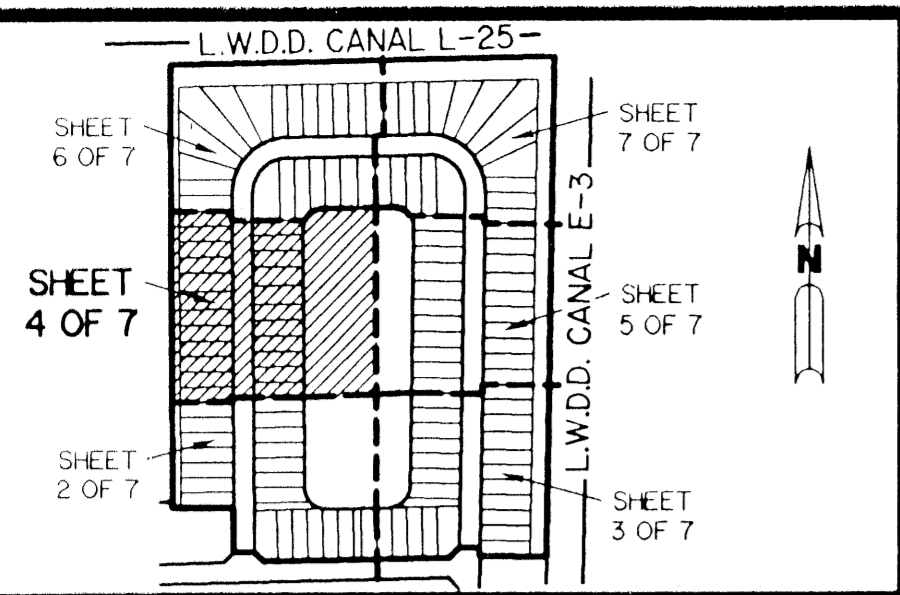


A PLANNED UNIT DEVELOPMENT

MAJESTIC ISLES - PLAT THREE

BEING A REPLAT OF A PORTION OF TRACTS 37, 38, 39, AND 40 ACCORDING TO THE PLAT OF THE SUBDIVISION OF SECTION 26, TOWNSHIP 45 SOUTH, RANGE 42 EAST. AS RECORDED IN PLAT BOOK 6, PAGE 26, PUBLIC RECORDS OF PALM BEACH COUNTY, FLORIDA.

SHEET 4 OF 7 MARCH, 1995



PET. 88-139B
No SCHOOLS-RESTRICTIVE COVENANT
5/3/12

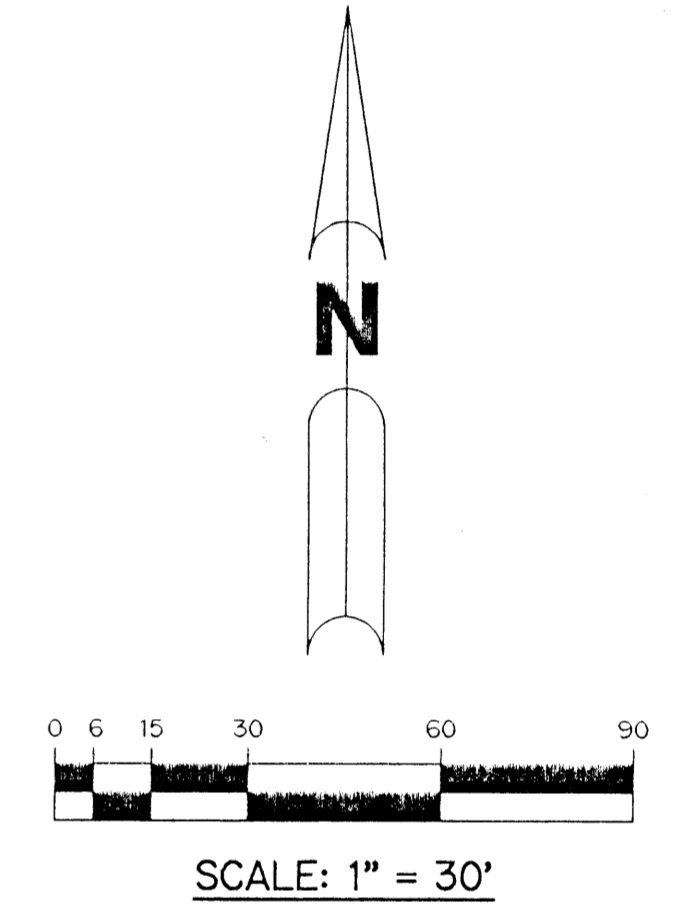
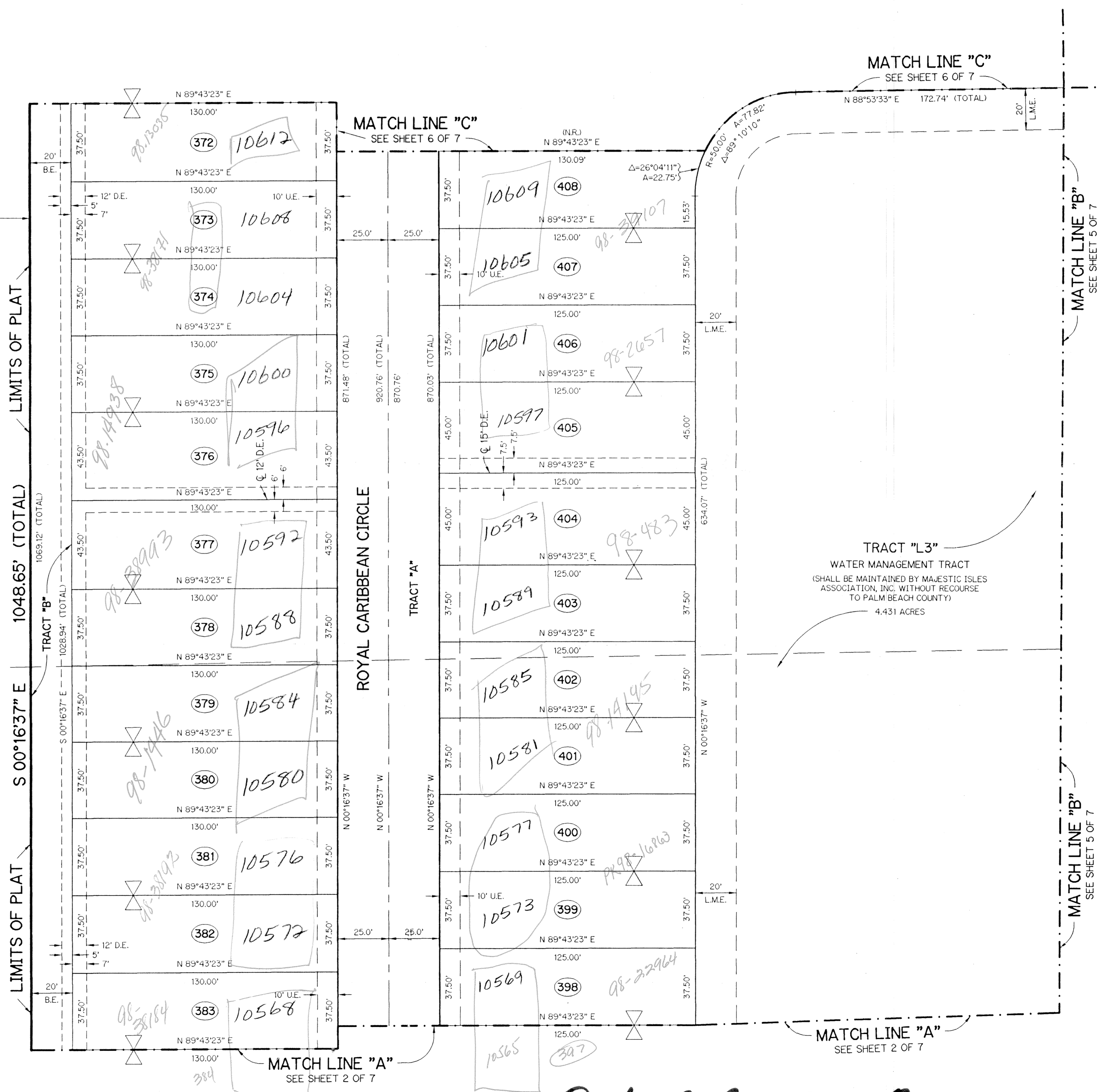
WEST LINE OF SOUTH WEST ONE-QUARTER OF SECTION 26, TOWNSHIP 45 SOUTH, RANGE 42 EAST.

(TRACT 39) SUBDIVISION OF SECTION 26 (P.B. 6, PG. 26)

TRACT 39 SUB.
TRACT 38 SUB.

(TRACT 38) SUBDIVISION OF SECTION 26 (P.B. 6, PG. 26)

- LEGEND:
- - PERMANENT REFERENCE MONUMENT, PLS #4190
 - - PERMANENT CONTROL POINT, PLS #4190
 - Δ - DELTA ANGLE
 - A - ARC LENGTH
 - B.E. - BUFFER EASEMENT
 - D.B. - DEED BOOK
 - D.E. - DRAINAGE EASEMENT
 - L.M.E. - LAKE MAINTENANCE EASEMENT
 - L.W.D.D. - LAKE WORTH DRAINAGE DISTRICT
 - N.R. - NOT RADIAL
 - N.T.S. - NOT TO SCALE
 - O.R.B. - OFFICIAL RECORD BOOK
 - P.B. - PLAT BOOK
 - PGS. - PAGES
 - P.L.S. - PROFESSIONAL LAND SURVEYOR
 - SUB. - SUBDIVISION OF SECTION 26 (P.B. 6, PG. 26)
 - R - RADIUS
 - R/W - RIGHT-OF-WAY
 - TYP. - TYPICAL
 - U.E. - UTILITY EASEMENT
 - ⊗ - INDICATES COMMON LOT LINE



CAMBRIDGE PARK PUD
PARCEL B

THIS INSTRUMENT PREPARED BY
WILBUR F. DIVINE, P.L.S. 4190, STATE OF FLORIDA
LAWSON, NOBLE AND ASSOCIATES, INC.
ENGINEERS PLANNERS SURVEYORS
WEST PALM BEACH, FLORIDA

0627-003

8/1/68